

ICE MOUNTAIN

Park
&
Campground

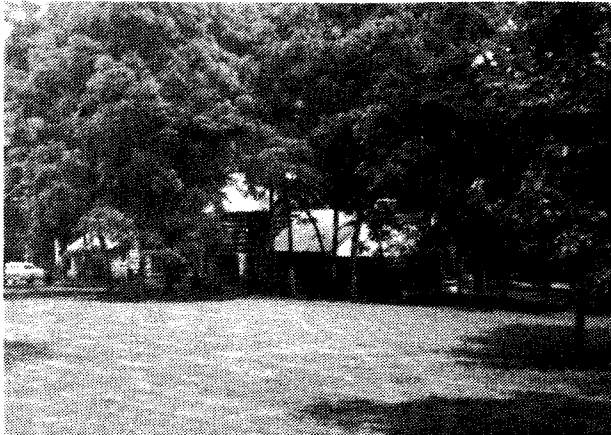


Slanesville, West Virginia
at North River Mills

Nature's Refrigerator



Affords camping and recreation leisure at its finest



ICE MOUNTAIN

Open April 1st thru November 1st

CAMPING FACILITIES:

Riverfront & Shaded Campsites

Unique Stone Bathhouse

Hot Showers

Daily Garbage Pickup

Water and Electric Hookups

Dumping Station

Picnic Tables & Fire Rings

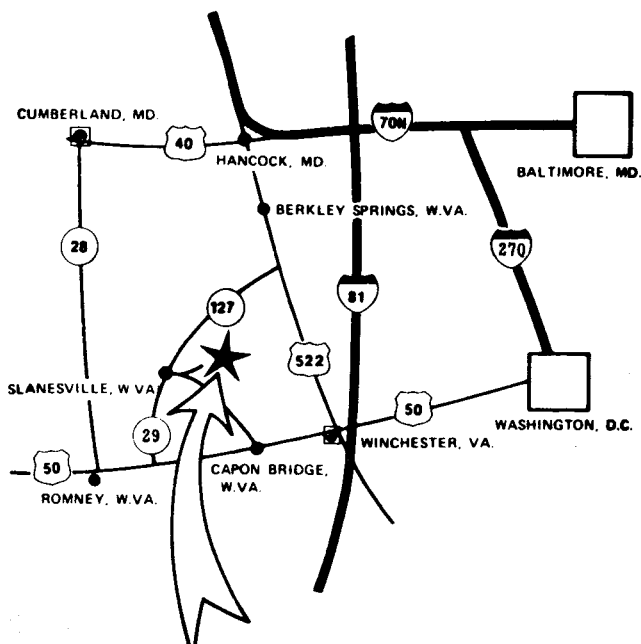
Firewood

Near Gas Stations & Churches

RENTAL CABINS:



Thousands of feet of Crystal Clear North River



ICE MOUNTAIN
P.O. Box 511
Slanesville, WV 25444

FOR RESERVATIONS
OR INFORMATION
CALL